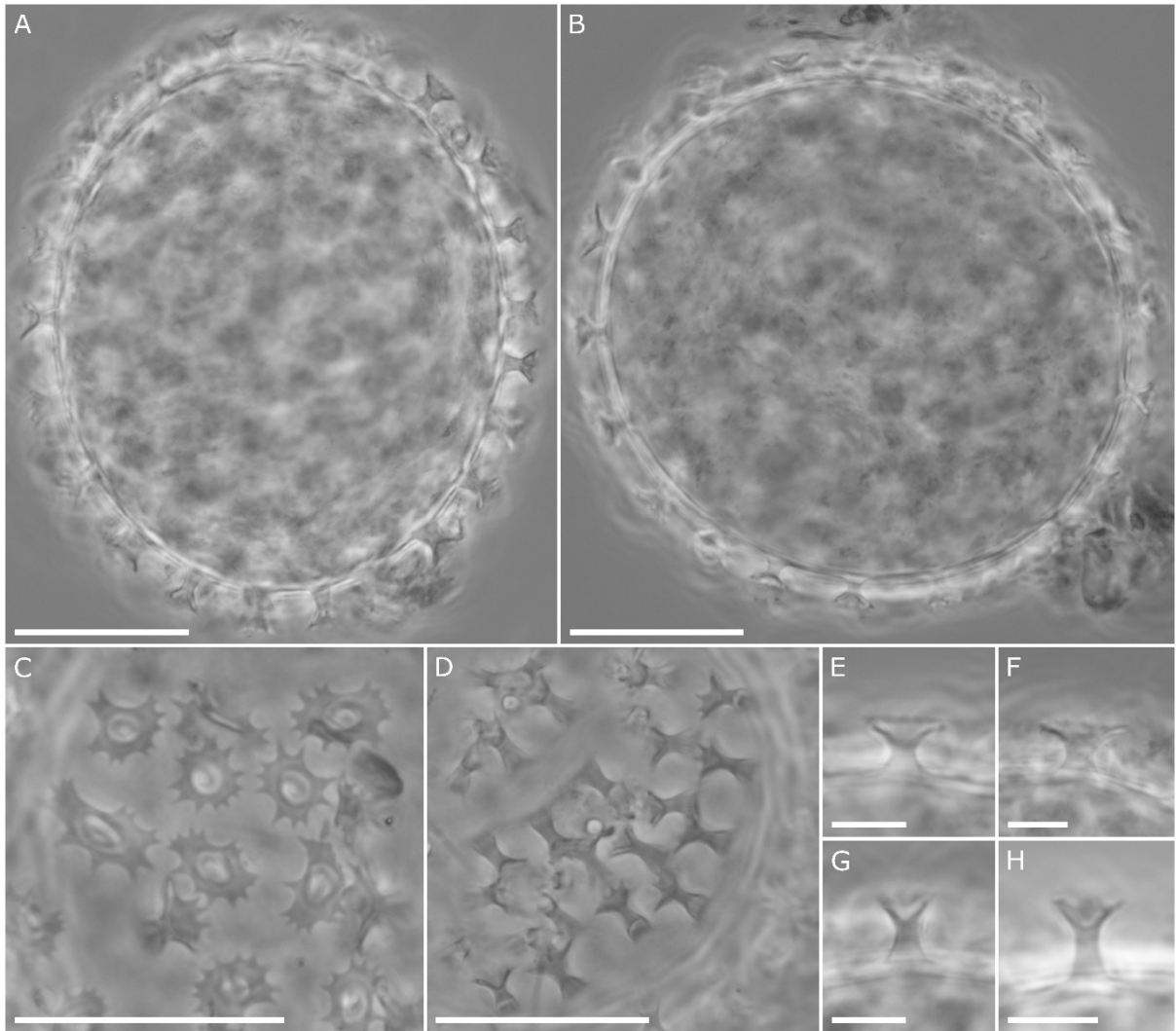
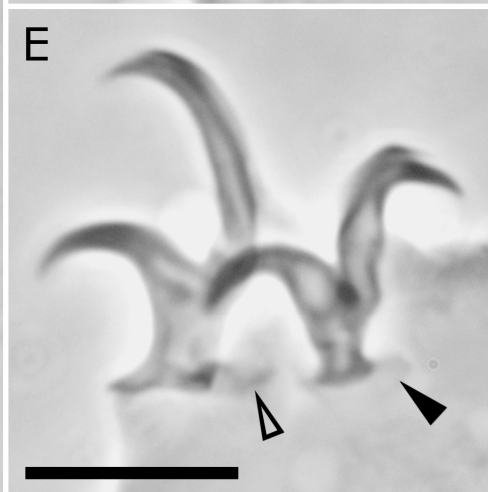
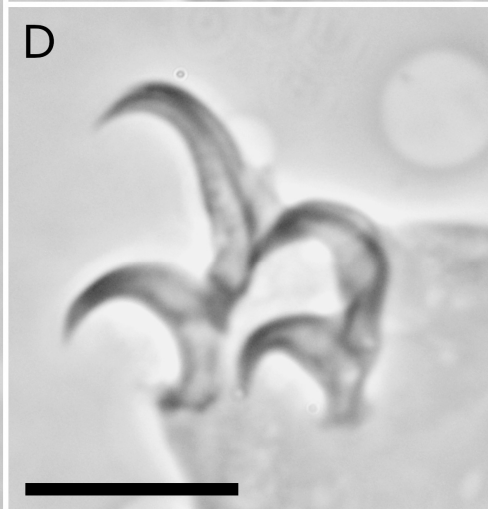
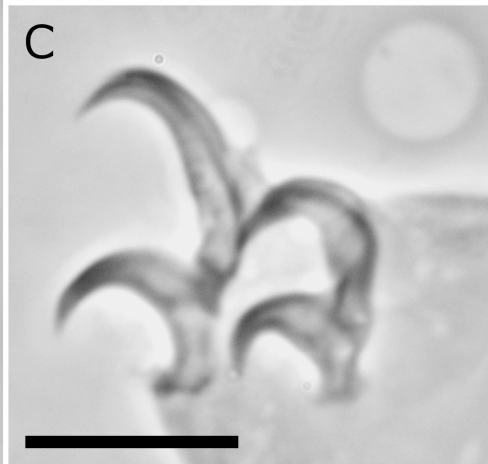
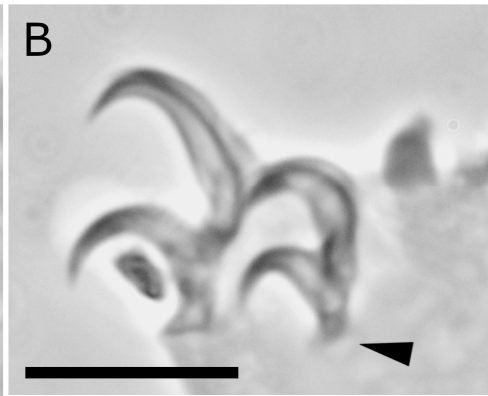


**Supplementary Figure S1.** Map showing the sampling areas (A1–A5) from which samples were collected. Each area comprises 5–15 samples (see Table 1 for the correspondence between sampling areas and localities).



**Supplementary figure S2.** Rotifer eggs from Italy, egg morphology observed in PCM. (**A, B**) Egg *in toto* showing an oval (**A**) or round (**B**) shape. (**C–D**) Details of egg processes and egg shell surface. (**E–H**) Midsections of egg processes. (**E, M**) Scale bar = A–D 20  $\mu\text{m}$ ; E–H 5  $\mu\text{m}$ .



**Supplementary figure S3.** Holotype of *Fontourion secchii* (Bertolani & Rebecchi, 1996) from Italy, bucco-pharyngeal apparatus and claws observed in PCM. (A) Entire bucco-pharyngeal apparatus. (B–E) Claws I, II, III and IV, respectively. Filled flat arrowheads indicate pseudolunulae, the empty flat arrowhead indicate the cuticular thickening at the base of the posterior claw. Scale bar = 10  $\mu\text{m}$ .